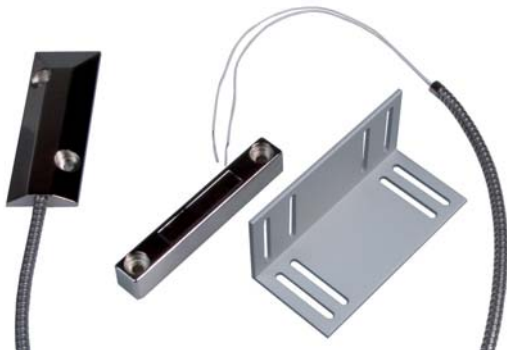


## Heavy-duty magnetic detector SA-220



- **Heavy-duty magnetic detector SA-220 is designed for security of „openable“ parts of the object.**
- SA-220 is used for big metal door with wire outlet in armoured shoulder.
- Cars are allowed to pass over this SA-220 detector.

### Technical parameters:

Operating distance:	75 mm
Dimensions:	106 x 38 x 10 mm
Weight:	230 g

## Optical detector of smoke SD-212SP



- **Optical detector of smoke SD-212SP is designated to detect fire.**
- SD-212SP has in-built internal acoustic siren for local warning.
- Electronic relay provides output for alarm signal and detector is equipped by an adjustable function of alarm memory. Internal auto test of detector is carried out on regular basis.
- Principle of infralight dispersion on firm parts of optical chamber is used to detect smoke. Detector well reacts to visible smoke coming up from smoldering for example wood, paper, textile etc.
- Less suitable use is for detection of open fires with small volume of smoke and with fast temperature growth ( spirit etc.). For this reason the detector is equipped by an auxiliary thermo sensor which activates alarm in case of temperature + 60.. +70°C (depending on temperature growth)

### Technical parameters:

Supply voltage/current:	10 - 15 V DC/3mA
Output el.relay:	loadability 0,1 A / 60 V, max 16 Ω
Detector sensitivity:	m= 0,06 to 0,08 dB with 1 m/s (according to EN 54-7)
Detection method:	optical light dispersion
Temperature detection:	+60 to +70 °C (according to rapidity of temperature)
Resistance against HF disturbances:	30 V/m
Acoustic siren output:	95 dB/m
Designated for environs:	internal general
Operating temperature:	-10 °C to +55 °C
Relative humidity	25 % - 75 %
Storage temperature:	-20 °C to +70 °C
Protection degree:	IP 40 (EN 60 529)
Installation:	level surface mounting
Dimensions:	φ 120 x 40 mm
Weight:	150 g