

ELKO EP, s.r.o.
 Palackého 493
 769 01 Holešov, Všetuly
 Czech Republic
 Tel.: +420 573 514 211
 e-mail: elko@elkoep.com
 www.elkoep.com

Made in Czech Republic

02-6/2017 Rev.: 0



MR-41 MR-42

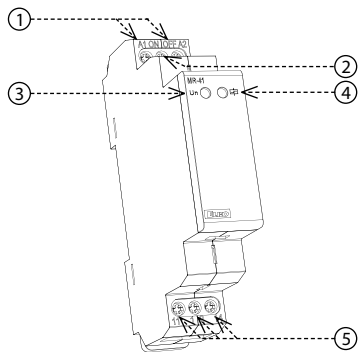
Memory relay



Characteristics

- memory (impulse) switches, controlled by buttons for light switching from more places, are a practical replacement for three-way switches (No.6) and cross-bar switches (No.7)
- thanks to control by buttons (unlimited number, connected in parallel by 2 wires), installation gets more transparent and faster for mounting
- relay MR-41/42 remembers its state after re-energization in a way that it is always switched off, after energization it automatically returns into its state before de-energization
- MR-41 - output contact: 1x changeover / SPDT 16 A
- MR-42 - options - 2x parallel contacts or the other relay is latching
 - function selected via external jumper between B1 - B2
 - output contact: 2x changeover / DPDT 16 A
- supply voltage AC 230 V or AC/DC 12 - 240 V
- 1-MODULE version, DIN rail mounting, controlling by buttons

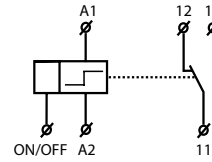
Description



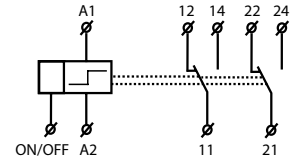
1. Supply voltage terminals
2. Control input
3. Supply indication
4. Output indication
5. Output contacts

Symbol

MR-41

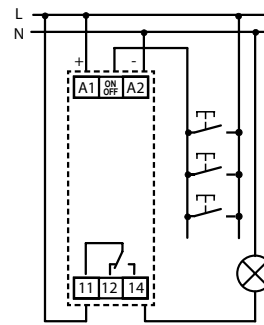


MR-42

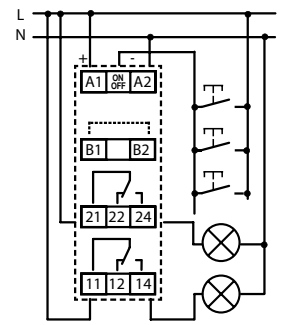


Connection

MR-41



MR-42



Type of load	$\cos \varphi \geq 0.95$								
Mat. contacts AgSnO ₂ contact 16A	AC1 250V / 16A	AC2 250V / 5A	AC3 250V / 3A	AC5a uncompensated 230V / 3A (690VA)	AC5a compensated 230V / 3A (690VA) to max. input C=14uF	AC5b 1000W	AC6a x	AC7b 250V / 3A	AC12 x
Type of load									
Mat. contacts AgSnO ₂ contact 16A	AC13 x	AC14 250V / 6A	AC15 250V / 6A	DC1 24V / 10A	DC3 24V / 3A	DC5 24V / 2A	DC12 24V / 6A	DC13 24V / 2A	DC14 x

MR-41 MR-42

Number of functions:	1	2
Supply terminals:	A1 - A2	
Voltage range:	AC/DC 12 - 240 V (AC 50 - 60 Hz)	
Power input (max.):	AC 0.17 - 3 VA / DC 0.1 - 1.2 W	AC 0.17 - 12 VA / DC 0.11 - 1.9 W
Voltage range:	AC 230 V / 50 - 60 Hz	
Power input (apparent / loss):	AC max. 12 VA / 1.2 W	AC max. 12 VA / 1.9 W
Max. dissipated power (Un + terminals):	3 W	4.5 W
Supply voltage tolerance:	-15 %; +10 %	
Supply indication:	green LED	

Output

Number of contacts:	1x changeover / SPDT (AgSnO ₂)	2x changeover / DPDT (AgSnO ₂)
Current rating:	16 A / AC1	
Breaking capacity:	4000 VA / AC1, 384 W / DC	
Inrush current:	30 A / < 3 s	
Switching voltage:	250 V AC / 24 V DC	
Output indication:	red LED	
Mechanical life:	3x10 ⁷	
Electrical life (AC1):	0.7x10 ⁵	

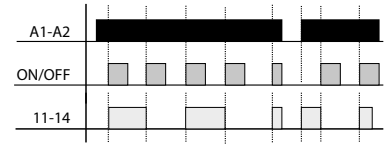
Control

Consumption of input:	AC 0.025 - 0.2 VA / DC 0.1 - 0.7 W (UNI), AC 0.53 VA (AC 230 V)
Load between A2-ON/OFF:	Yes
Control. terminals:	A1 - ON/OFF
Glow tubes connetions:	No (UNI), Yes (230 V)
Max. amount of glow lamps connected to controlling input:	UNI - glow lamps cannot connected, 230 V - max. amount 5 pcs (measured with glow lamp 0.68 mA / 230 V AC)
Impulse length:	min. 25 ms / max. unlimited

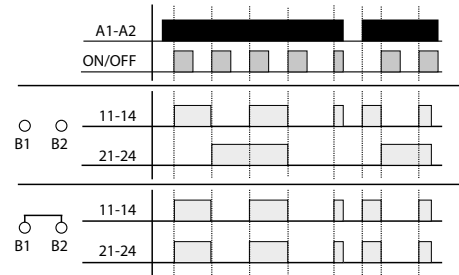
Other information

Operating temperature:	-20 °C to +55 °C (-4 °F to 131 °F)	
Storage temperature:	-30 °C to +70 °C (-22 °F to 158 °F)	
Electrical strength:	4 kV (supply - output)	
Operating position:	any	
Mounting:	DIN rail EN 60715	
Protection degree:	IP40 from front panel / IP20 terminals	
Overvoltage category:	III.	
Pollution degree:	2	
Max. cable size (mm ²):	solid wire max. 1x 2.5 or 2x 1.5 / with sleeve max. 1x 2.5 (AWG 12)	
Dimensions:	90 x 17.6 x 64 mm (3.5" x 0.7" x 2.5")	
Weight:	(UNI) - 64 g / 2.3 oz., (230) - 61 g / 2.2 oz.	(UNI) - 88 g / 3.1 oz., (230) - 85 g / 3 oz.
Standards:	EN 61810-1, EN 61010-1	

MR-41



MR-42



Warning

Device is constructed for connection in 1-phase main alternating current and must be installed according to norms valid in the state of application. Connection according to the details in this direction. Installation, connection, setting and servicing should be installed by qualified electrician staff only, who has learnt these instruction and functions of the device. This device contains protection against overvoltage peaks and disturbances in supply. For correct function of the protection of this device there must be suitable protections of higher degree (A, B, C) installed in front of them. According to standards elimination of disturbances must be ensured. Before installation the main switch must be in position "OFF" and the device should be de-energized. Don't install the device to sources of excessive electro-magnetic interference. By correct installation ensure ideal air circulation so in case of permanent operation and higher ambient temperature the maximal operating temperature of the device is not exceeded. For installation and setting use screw-driver cca 2 mm. The device is fully-electronic - installation should be carried out according to this fact. Non-problematic function depends also on the way of transportation, storing and handling. In case of any signs of destruction, deformation, non-function or missing part, don't install and claim at your seller t is possible to dismount the device after its lifetime, recycle, or store in protective dump.